

Note - it is recommended that "CUT HERE" graphics are added above zipper

TEAR HERE TO OPEN

**Maxforce<sup>®</sup> FC**  
**Fire Ant Bait**



**FOR PEST CONTROL OPERATORS AND COMMERCIAL USE ONLY**  
**ACTIVE INGREDIENT:**  
 Fipronil 5-amino-1-(2,6-dichloro-4-(trifluoromethyl)phenoxy)-4-(1R,3S)-trifluoromethylsulfanyl)-1H-pyrazole-3-carbonitrile..... 00.00045%  
**INERT INGREDIENTS:**..... 99.99955%  
**TOTAL:**..... 100.0%  
 EPA Reg. No. 432-1433      EPA Est. No. 67572-GA-1

**KEEP OUT OF REACH OF CHILDREN**  
**CAUTION**  
**PRECAUTION**

St used on entrance to equire, busque a adjacent para que se a equique a usido em detale. (If you do not  
 For MEDICAL AND TRANSPORT USE, Please see the MSDS for details. For more information, call 1-800-234-2389, ext. 2389.  
 For PRODUCT USE, Information Call 1-800-331-2867.

| FIRST AID                      |  |
|--------------------------------|--|
| <b>IF SWALLOWED:</b>           | • Call a poison control center or physician immediately for treatment advice. Have a person sip a glass of water. If able to swallow, take 5 to 15 mL of water every 15 minutes. Do not give anything by mouth to an unconscious person. |
| <b>IF ON SKIN or CLOTHING:</b> | • Take off contaminated clothing. Wash thoroughly with soap and water for 15-20 minutes. • Do not give anything by mouth to an unconscious person.   |
| <b>IF IN EYES:</b>             | • Hold eye open and flush slowly and gently with water for 15-20 minutes. • Remove contact lenses, if present after the first 5 minutes, then continue flushing eye. • Call a poison control center or doctor for treatment advice.      |

Have the product container of label with you when calling a poison control center or doctor or going for medical treatment. Have this information readily available to the health care provider: product name (Maxforce FC), amount of product, and symptoms of illness in the patient.

**HAZARD TO HUMANS AND DOMESTIC ANIMALS**  
**CAUTION**

If absorbed through the skin. Causes moderate eye irritation. Avoid contact with skin, eyes or clothing. Wash thoroughly with soap and water after handling and before eating, drinking, chewing gum or using tobacco. Remove and wash contaminated clothing before reuse.  
**SYMPTOMS OF POISONING:** In severe cases of overexposure by oral ingestion, lethargy, muscle tremors, and in severe cases, convulsions and coma.  
**PERSONAL PROTECTIVE EQUIPMENT (PPE):** Appropriate clothing and equipment for protection of the user or others. All users must wear long sleeved shirt and long pants, waterproof gloves.

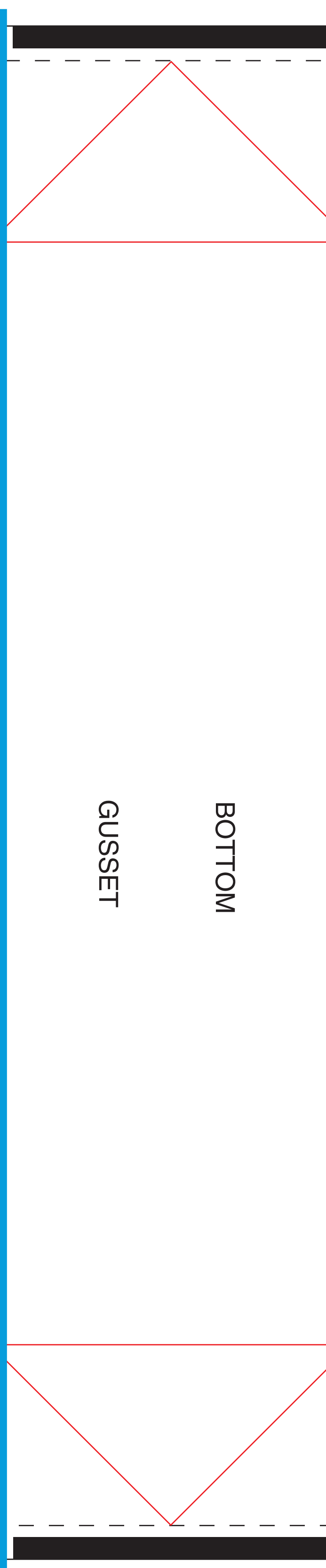
Follow manufacturer's instructions for cleaning and maintaining PPE. If no such instructions for washables, use either hot water and detergent or PPE cleaner. Do not reuse PPE until it has been properly cleaned.  
 When handlers use closed systems or enclosed cabs, in a manner that meets the requirements listed in the Worker Protection Standard (WPS) or agricultural practices (40 CFR 170.240 (f) (4-6)), the handler PPE requirement may be reduced or modified as specified in the WPS. **IMPORTANT:** When reduced PPE is worn because a closed system is being used, handlers must be provided at PPE specified above for applicators and other handlers, and have such PPE immediately available for use in an emergency, such as a spill or equipment breakdown. Follow manufacturer's instructions for use of PPE. If no instructions are provided, use detergent and hot water. Keep and wash PPE separately from other laundry.

**User Safety Recommendations**

- Wash hands before eating, drinking, chewing gum, using tobacco or using the toilet.
- Remove clothing immediately if pesticide gets inside. Then wash body thoroughly and put on clean clothing.
- Possible: Wash thoroughly and change into clean clothing.

Produced for:  
**Bayer Environmental Science**  
 2 T. W. Alexander Drive  
 Research Triangle Park, NC 27709  
 Product of China

**Net Contents**  
**10 LBS**  
**79041624**  
 79029298 121115M1



**Net Contents**  
**10 LBS**  
**79041624**  
 79029298 121115M1

**Net Contents**  
**10 LBS**  
**79041624**  
 79029298 121115M1

| Sites   | Pest Controlled                      | Amount of Product per Pound                    | Application Directions   |
|---|--------------------------------------|--|--|
| Home lawns, golf courses, and commercial and recreational turf Adjacent Landscape Beds* Sodlams | Imported Fire Ants (Solenopsis spp.) | 1.5 - 5.0                                      | <b>MOUND APPLICATIONS:</b> Shake the granules uniformly around the mound, but do not disturb the mound. Broadcast the granules in a circle about 4 or 5 feet in diameter with the mound being the center of the circle. Apply when ants are actively looking for food; immediately before or after irrigation or rain. Fire ants will begin to die from treatment in about 14 days. Do not reapply for 3-6 weeks. Do not exceed 4 applications per year. |
| Home lawns, golf courses, and commercial and recreational turf Adjacent Landscape Beds* Sodlams | Imported Fire Ants (Solenopsis spp.) | 2 - 5 tablespoons (less than 5 lbs of product) | <b>BROADCAST APPLICATIONS:</b> Make broadcast applications of this product to lawns and areas to control existing active imported fire ant populations. Apply when ants are actively looking for food; immediately before or after irrigation or rain. Fire ants will begin to die from a proper treatment in about 14 days. Do not reapply for 3-6 weeks. Do not exceed 4 applications per year.  |

**IMPORTANT: READ BEFORE USE**  
 Read the entire Directions for Use, Conditions, Disclaimer of Warranties and Limitations of Liability before using this product. If terms are not acceptable, return the unopened product container at once. By using this product, user or buyer accepts the following Conditions, Disclaimer of Warranties and Limitations of Liability.  
**CONDITIONS:** The Directions for Use of this product are believed to be adequate and must be followed carefully. However, it is impossible to eliminate all risks associated with the use of this product. Crop injury, pest resistance, or other unintended consequences may result from the use of such factors as weather conditions, presence of other materials, or the manner of use or application, all of which are beyond the control of Bayer CropScience LP. All other conditions, warranties, and limitations shall be void where they conflict with the above.  
**DISCLAIMER OF WARRANTIES:** TO THE EXTENT CONSISTENT WITH APPLICABLE LAW, BAYER CROPSOURCE LP MAKES NO OTHER WARRANTIES, EXPRESS OR IMPLIED, OF MERCHANTABILITY OR OF FITNESS FOR A PARTICULAR PURPOSE OR OTHERWISE, THAT EXCEED BEYOND THE STATEMENTS MADE ON THIS LABEL. No agent of Bayer CropScience LP is authorized to make any warranties beyond those contained herein or to modify the warranties contained herein. TO THE EXTENT CONSISTENT WITH APPLICABLE LAW, BAYER CROPSOURCE LP DISCLAIMS ANY LIABILITY WHATSOEVER FOR SPECIAL, INCIDENTAL OR CONSEQUENTIAL DAMAGES RESULTING FROM THE USE OR HANDLING OF THIS PRODUCT.  
**LIMITATIONS OF LIABILITY:** TO THE EXTENT CONSISTENT WITH APPLICABLE LAW, THE EXCLUSIVE REMEDY OF THE USER OR BUYER FOR ANY AND ALL LOSSES, INJURIES OR DAMAGES RESULTING FROM THE USE OF THIS PRODUCT SHALL BE LIMITED TO THE PURCHASE PRICE OF THE PRODUCT. THIS WARRANTY, TERM, MERCHANTABILITY, AND OTHERWISE, SHALL NOT EXCEED THE PURCHASE PRICE PAID. ©BAYER CROPSOURCE LP'S ELECTION, THE REPLACEMENT OF THIS PRODUCT.

| Application Rate of Maxforce FC Fire Ant Bait   | Pounds Product per Acre | Ounces Product per 1,000 Sq Ft | Application Directions  |
|---|-------------------------|--------------------------------|---|
| Home lawns, golf courses, and commercial and recreational turf Adjacent Landscape Beds* Sodlams | 1.5 - 5.0               | 0.5 - 1.83                     | <b>BROADCAST APPLICATIONS:</b> Make broadcast applications of this product to lawns and areas to control existing active imported fire ant populations. Apply when ants are actively looking for food; immediately before or after irrigation or rain. Fire ants will begin to die from a proper treatment in about 14 days. Do not reapply for 3-6 weeks. Do not exceed 4 applications per year. |

**FOR USE ON HOME LAWNS, GOLF COURSES, AND COMMERCIAL AND RECREATIONAL TURF AND SODLAMS**  
**GENERAL PRECAUTIONS AND INSTRUCTIONS**  
 Do not apply around fruit or nut trees, or any plant grown for food.  
**GENERAL INFORMATION**  
 Maxforce FC Fire Ant Bait is intended for use to control imported fire ants in turfgrass. The activity of the product may vary with rate of application, environmental conditions, and activity on foraging ants at time of application.  
 Do not apply in combination with other pesticides, herbicides, and other biologically active materials. No phytotoxic response on any turfgrass species has been observed to date.

**AGRICULTURAL USE REQUIREMENTS**  
 Do not enter or allow worker entry into treated areas during the restricted entry interval (REI) of 24 hours. PPE required for entry to treated areas that is permitted under the Worker Protection Standard and that involves contact with anything that has been treated, such as plants, soil, or water is:  
 - long-sleeved shirt and long pants  
 - chemical-resistant gloves below the elbows  
 - shoes plus socks

**NON-AGRICULTURAL USE REQUIREMENTS**  
 Always wear protective clothing and use appropriate equipment during application and handling. Always contact with granules. Avoid breathing dust.  
 Do not apply around fruit or nut trees, or any plant grown for food.  
**CONTAINER DISPOSAL**  
 Non-reusable container. Do not reuse or refill this container. Completely empty bag into application equipment. Then dispose of empty bag in a sanitary landfill or by incineration, or if allowed by state and local authorities, by open burning. If container is burned, stay out of smoke.

**STORAGE AND DISPOSAL**  
 Do not contaminate water, food, or feed by storage or disposal.  
**PESTICIDE STORAGE**  
 Do not store in or near living quarters, schools, hospitals, places of food preparation, or areas where food is eaten, and away from animal quarters. Store unused product in original container only out of reach of children and animals. NEVER TRANSFER THIS PRODUCT TO ANOTHER CONTAINER FOR STORAGE.  
**PESTICIDE DISPOSAL**  
 Pesticide wastes are acutely hazardous. Improper disposal of excess pesticide is a violation of Federal law.  
 Contamination with this product will render water, food or feed unfit for human or animal consumption.

**FOR USE ON HOME LAWNS, GOLF COURSES, AND COMMERCIAL AND RECREATIONAL TURF AND SODLAMS**  
**GENERAL PRECAUTIONS AND INSTRUCTIONS**  
 Do not apply around fruit or nut trees, or any plant grown for food.  
**GENERAL INFORMATION**  
 Maxforce FC Fire Ant Bait is intended for use to control imported fire ants in turfgrass. The activity of the product may vary with rate of application, environmental conditions, and activity on foraging ants at time of application.  
 Do not apply in combination with other pesticides, herbicides, and other biologically active materials. No phytotoxic response on any turfgrass species has been observed to date.

**AGRICULTURAL USE REQUIREMENTS**  
 Do not enter or allow worker entry into treated areas during the restricted entry interval (REI) of 24 hours. PPE required for entry to treated areas that is permitted under the Worker Protection Standard and that involves contact with anything that has been treated, such as plants, soil, or water is:  
 - long-sleeved shirt and long pants  
 - chemical-resistant gloves below the elbows  
 - shoes plus socks

**NON-AGRICULTURAL USE REQUIREMENTS**  
 Always wear protective clothing and use appropriate equipment during application and handling. Always contact with granules. Avoid breathing dust.  
 Do not apply around fruit or nut trees, or any plant grown for food.  
**CONTAINER DISPOSAL**  
 Non-reusable container. Do not reuse or refill this container. Completely empty bag into application equipment. Then dispose of empty bag in a sanitary landfill or by incineration, or if allowed by state and local authorities, by open burning. If container is burned, stay out of smoke.

**STORAGE AND DISPOSAL**  
 Do not contaminate water, food, or feed by storage or disposal.  
**PESTICIDE STORAGE**  
 Do not store in or near living quarters, schools, hospitals, places of food preparation, or areas where food is eaten, and away from animal quarters. Store unused product in original container only out of reach of children and animals. NEVER TRANSFER THIS PRODUCT TO ANOTHER CONTAINER FOR STORAGE.  
**PESTICIDE DISPOSAL**  
 Pesticide wastes are acutely hazardous. Improper disposal of excess pesticide is a violation of Federal law.  
 Contamination with this product will render water, food or feed unfit for human or animal consumption.

**ENVIRONMENTAL HAZARDS**  
 This pesticide is toxic to birds, fish, and aquatic invertebrates. Do not apply directly to water or to areas where surface water is present or to intertidal areas below the mean high water mark. Runoff from treated areas may be hazardous to aquatic organisms in nearby waters. Do not apply to areas where the pesticide may drift onto adjacent areas.  
 Do not apply directly to water or to areas where surface water is present or to intertidal areas below the mean high water mark. Runoff from treated areas may be hazardous to aquatic organisms in nearby waters. Do not apply to areas where the pesticide may drift onto adjacent areas.

**DIRECTIONS FOR USE**  
 Read entire label before using this product.  
 It is a violation of Federal Law to use this product in a manner inconsistent with its labeling.  
 Do not apply this product in a way that will contact workers or other persons, either directly or through drift. Only prohibited handlers may be in the area during application. For any requirements specific to your State or Tribe, consult the agency responsible for pesticide regulation. Do not apply to pastures or grazing lands.

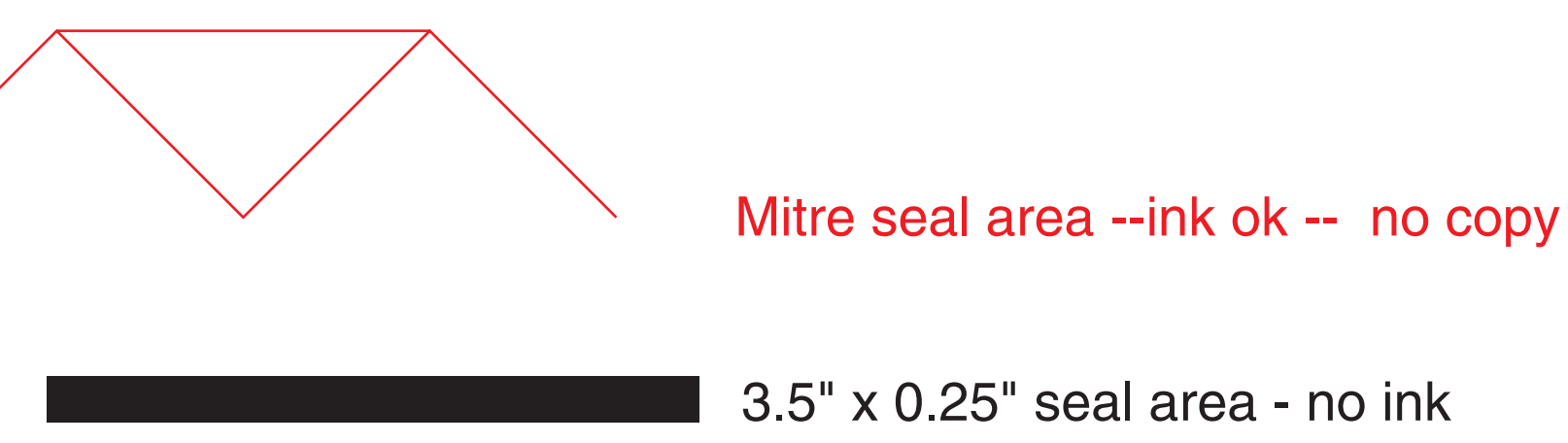
**ENVIRONMENTAL HAZARDS**  
 This pesticide is toxic to birds, fish, and aquatic invertebrates. Do not apply directly to water or to areas where surface water is present or to intertidal areas below the mean high water mark. Runoff from treated areas may be hazardous to aquatic organisms in nearby waters. Do not apply to areas where the pesticide may drift onto adjacent areas.  
 Do not apply directly to water or to areas where surface water is present or to intertidal areas below the mean high water mark. Runoff from treated areas may be hazardous to aquatic organisms in nearby waters. Do not apply to areas where the pesticide may drift onto adjacent areas.

Due to print limitation top .5" can print one colour only

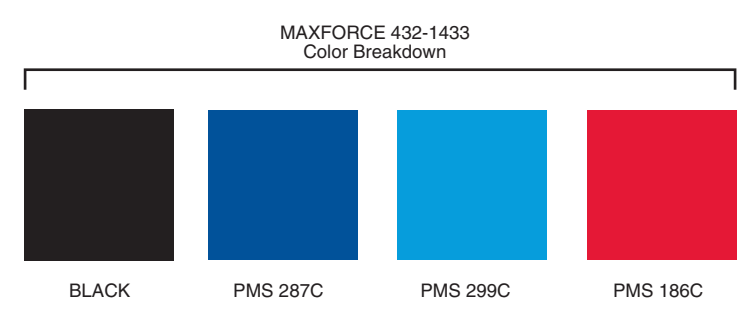
2.75" Zipper position

|                                     |                 |
|-------------------------------------|-----------------|
|                                     | Date: Jan 10/07 |
| <b>PEEL PLASTIC PRODUCTS</b>        |                 |
| Cust: Bayer                         |                 |
| Design: 10 lb FAK                   |                 |
| Size: 17 x 26 + 4 bg pouch with zip |                 |
| Eyeline/Eyemark - as per dieline    |                 |
| Process - 300 DPI - @ final size    |                 |

Peel Plastics Products Ltd has done everything possible to ensure the accuracy of this dieline. It is your responsibility to check and confirm all dimensions and measurements before starting your project.



UPC should be 100% minimum and oriented in direction as shown on die line  
 UPC should not be in any seal areas including mitre seal area around gusset



**NOTE:** When this document is printed at 100% (actual size), this text is 6 pt Helvetica 75 Bold.  
When this document is printed at 100% (actual size), this text is 6 pt HelveticaNeue Condensed.



# Maxforce®

## FC

# Fire Ant Bait

**FOR PEST CONTROL OPERATORS AND COMMERCIAL USE ONLY**

**ACTIVE INGREDIENT:**

Fipronil: 5-amino-1-(2,6-dichloro-4-(trifluoromethyl) phenyl)-4-((1,R,S)-(trifluoromethyl)sulfinyl)

-1-H-pyrazole-3-carbonitrile ..... 00.00045%

**INERT INGREDIENTS:** ..... 99.99955%

**TOTAL:** ..... 100.0%

EPA Reg. No. 432-1433

EPA Est. No. 67572-GA-1

**KEEP OUT OF REACH OF CHILDREN**

# **CAUTION PRECAUCIÓN**

Si usted no entiende la etiqueta, busque a alguien para que se la explique a usted en detalle. (If you do not understand this label, find someone to explain it to you).

For **MEDICAL** And **TRANSPORTATION** Emergencies **ONLY** Call 24 Hours A Day 1-800-228-5635  
For **PRODUCT USE** Information Call 1-800-331-2867

## **FIRST AID**

|                                |   |
|--------------------------------|---|
| <b>IF SWALLOWED:</b>           | <ul style="list-style-type: none"><li>• Call a poison control center or physician immediately for treatment advice. Have a person sip a glass of water, if able to swallow.</li><li>• Do not induce vomiting unless told to do so by the poison control center or doctor.</li><li>• Do not give anything by mouth to an unconscious person.</li></ul> |
| <b>IF ON SKIN or CLOTHING:</b> | <ul style="list-style-type: none"><li>• Take off contaminated clothing.</li><li>• Rinse skin immediately with plenty of water for 15-20 minutes.</li><li>• Call a poison control center for treatment advice.</li></ul>   |
| <b>IF IN EYES:</b>             | <ul style="list-style-type: none"><li>• Hold eye open and rinse slowly and gently with water for 15-20 minutes.</li><li>• Remove contact lenses, if present, after the first 5 minutes, then continue rinsing eye.</li><li>• Call a poison control center or doctor for treatment advice.</li></ul>   |

Have the product container or label with you when calling a poison control center or doctor or going for treatment. You may also contact 1-800-334-7577 for emergency medical treatment information.

**NOTE TO PHYSICIAN:** There is no specific antidote. All treatment should be based on observed signs and symptoms of distress in the patient.

## **PRECAUTIONARY STATEMENTS**

### **HAZARD TO HUMANS AND DOMESTIC ANIMALS CAUTION**

Harmful if absorbed through the skin. Causes moderate eye irritation. Avoid contact with skin, eyes or clothing. Wash thoroughly with soap and water after handling and before eating, drinking, chewing gum or using tobacco. Remove and wash contaminated clothing before reuse.

**SYMPTOMS OF POISONING:** In severe cases of overexposure by oral ingestion, lethargy, muscle tremors, and, in extreme cases, possibly convulsions, may occur.

### **PERSONAL PROTECTIVE EQUIPMENT (PPE)**

**Applicators, mixers, loaders and persons cleaning application equipment must wear:**

long sleeved shirt and long pants,  
waterproof gloves,  
shoes plus socks.

Follow manufacturer's instructions for cleaning and maintaining PPE. If no such instructions for washables, use detergent and hot water. Keep and wash PPE separately from other laundry.

When handlers use closed systems or enclosed cabs, in a manner that meets the requirements listed in the Worker Protection Standard (WPS) or agricultural practices (40 CFR 170.240 (d) (4-6), the handler PPE requirement may be reduced or modified as specified in the WPS. **IMPORTANT:** When reduced PPE is worn because a closed system is being used, handlers must be provided all PPE specified above for applicators and other handlers, and have such PPE immediately available for use in an emergency, such as a spill or equipment breakdown. Follow manufacturer's instructions for cleaning/maintaining PPE. If no instructions for washables, use detergent and hot water. Keep and wash PPE separately from other laundry.

## **User Safety Recommendations**

### **Users should:**

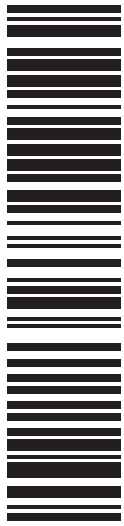
- Wash hands before eating, drinking, chewing gum, using tobacco or using the toilet.
- Remove clothing immediately if pesticide gets inside. Then wash body thoroughly and put on clean clothing.
- Remove PPE immediately after handling this product. Wash the outside of gloves before removing. As soon as possible, wash thoroughly and change into clean clothing.



Produced for:

**Bayer Environmental Science**

A Division of Bayer CropScience LP  
2 T. W. Alexander Drive  
Research Triangle Park, NC 27709  
Product of China



(01)00785740135327

Net Contents

**10** LBS

**79041624**

79002629B 121115AV1

## ENVIRONMENTAL HAZARDS

This pesticide is toxic to birds, fish, and aquatic invertebrates. Do not apply directly to water or to areas where surface water is present or to intertidal areas below the mean high water mark. Runoff from treated areas may be hazardous to aquatic organisms in neigh-

boring areas. Cover, incorporate or clean up granules that are spilled. Do not apply this product directly to bodies of water such as lakes, reservoirs, rivers, permanent streams, marshes or natural ponds, estuaries, or commercial fish ponds. Do not contaminate water when disposing of equipment washwater or rinsate.

## DIRECTIONS FOR USE

**It is a violation of Federal Law to use this product in a manner inconsistent with its labeling.  
Read entire label before using this product.**

Do not apply this product in a way that will contact workers or other persons, either directly or through drift. Only protected handlers may be in the area during application. For any requirements specific to your State or Tribe, consult the agency responsible for pesticide regulation. Do not apply to pastures or grazing lands.

## AGRICULTURAL USE REQUIREMENTS

Use this product in accordance with its labeling and with the Worker Protection Standard, 40 CFR 170. This Standard contains requirements for the protection of agricultural workers on farms, forests, nurseries, and greenhouses, and handlers of agricultural pesticides. It contains requirements for training, decontamination, notification, and emergency assistance. It also contains specific instructions and exceptions pertaining to the statements on this label about personal protective equipment (PPE), notifications to workers and restricted-entry intervals. The requirements in this box only apply to sodfarm uses of this product that are covered by the Worker Protection Standard.

Do not enter or allow worker entry into treated areas during the restricted entry interval (REI) of 24 hours. PPE required for entry to treated areas that is permitted under the Worker Protection Standard and that involves contact with anything that has been treated, such as plants, soil, or water is:

- coveralls
- waterproof gloves
- shoes plus socks

## NON-AGRICULTURAL USE REQUIREMENTS

The requirements in this box apply to uses of this product that are not within the scope of the Worker Protection Standard (WPS) for agricultural pesticides (40 CFR Part 170). The WPS applies when this product is used to produce agricultural plants on farms, forests, nurseries or greenhouses.

Always wear protective clothing and use appropriate equipment during application and handling. Avoid contact with granules. Avoid breathing dust.

## STORAGE AND DISPOSAL

Do not contaminate water, food, or feed by storage or disposal.

### PESTICIDE STORAGE

Do not store in or around the home or other residential areas. Store unused product in original container only, out of reach of children and animals. NEVER TRANSFER THIS PRODUCT TO ANOTHER CONTAINER FOR STORAGE.

### PESTICIDE DISPOSAL

Pesticide wastes are acutely hazardous. Improper disposal of excess pesticide is a violation of Federal law.

Contamination with this product will render water, food or feed unfit for human or animal consump-

tion. Wastes resulting from the use of this product may be disposed of on site or at an approved waste disposal facility.

### IN CASE OF SPILL

Sweep up spilled granules, transfer to a marked container, and dispose of wastes on site or at an approved waste disposal facility.

### CONTAINER DISPOSAL

Non-refillable container. Do not reuse or refill this container. Completely empty bag into application equipment. Then dispose of empty bag in a sanitary landfill or by incineration, or if allowed by State and local authorities, by open burning. If container is burned, stay out of smoke.

**FOR USE ON HOME LAWNS, GOLF COURSES, AND COMMERCIAL AND RECREATIONAL TURF, AND SODFARMS  
GENERAL PRECAUTIONS AND INSTRUCTIONS**

Always wear protective clothing and use appropriate equipment during application and handling. Avoid contact with granules. Avoid breathing dust.

This pesticide shall only be applied when the potential for drift to nearby bodies of water is minimal (that is wind speed is between 2-10 mph and wind is blowing away from the body of water).

**California:** This product can only be used in the Coachella Valley. Applications can only be made from April through September.

**USE RESTRICTIONS**

Do not apply to pastures or other grazing lands.

Do not apply around fruit or nut trees, or any plant grown for food.

**GENERAL INFORMATION**

Maxforce FC Fire Ant Bait is intended for use to control imported fire ants in turfgrass. The activity of the product may vary with rate of application, environmental conditions, and activity on foraging ants at time of application.

Do not apply in combination with other pesticides, fertilizers, and other biologically active materials.

No phytotoxic response on any turfgrass species has been observed to date.

**SPECIFIC USE DIRECTIONS**

**BROADCAST TREATMENTS**

Make application with broadcast equipment capable of applying 1.5 - 5.0 lbs of product/A. Calibrate and adjust equipment prior to application to ensure that the proper rate of product will be applied.

|  |   | Application Rate of Maxforce FC Fire Ant Bait |                                |   |
|--|---|---|--------------------------------|---|
| Sites  | Pest Controlled                                 | Pounds Product per Acre                       | Ounces Product per 1,000 Sq Ft | Application Directions  |
| Home lawns, golf courses, and commercial and recreational turf<br>Adjacent Landscape Beds*<br>Sodfarms | Imported Fire Ants<br>[ <i>Solenopsis</i> spp.] | 1.5 – 5.0                                     | 0.5 – 1.83                     | <b>BROADCAST APPLICATIONS:</b> Make broadcast applications of this product to turfgrass to control existing active imported fire ant populations. Apply when ants are actively looking for food; this is typically in the morning or evening. Do not apply Maxforce FC Fire Ant Bait immediately before or after irrigation or rain. Fire ants will begin to die from a proper treatment in about 14 days. Do not reapply for 3-6 weeks. Do not exceed 4 applications per year. |

**\*Only apply to landscape beds which have adequate cover to prevent run-off. Do not apply to bare soil.**

## MOUND TREATMENTS

Make application with shaker can or broadcast equipment that is capable of spreading 5 tablespoons of product uniformly around in a circle 4 - 5 feet in diameter.

|  |   | Application Rate of Maxforce FC Fire Ant Bait |   |  |
|--|---|---|---|--|
| Sites  | Pest Controlled                                 | Pounds Product per Acre                       | Amount of Product per Mound                                     | Application Directions   |
| Home lawns, golf courses, and commercial and recreational turf<br>Adjacent Landscape Beds*<br>Sodfarms | Imported Fire Ants<br>[ <i>Solenopsis</i> spp.] | 1.5 – 5.0                                     | 2 - 5 tablespoons<br>Do not apply more than 5 lbs of product/A. | <b>MOUND APPLICATIONS:</b> Shake the granules uniformly around the mound, but do not disturb the mound. Broadcast the granules in a circle about 4 or 5 feet in diameter with the mound being the center of the circle. Apply when ants are actively looking for food; this is typically in the morning or evening. Do not apply Maxforce FC Fire Ant Bait immediately before or after irrigation or rain. Fire ants will begin to die from a proper treatment in about 14 days. Do not reapply for 3-6 weeks.<br>Do not exceed 4 applications per year. |

**\*Only apply to landscape beds which have adequate cover to prevent run-off. Do not apply to bare soil.**

### IMPORTANT: READ BEFORE USE

Read the entire Directions for Use, Conditions, Disclaimer of Warranties and Limitations of Liability before using this product. If terms are not acceptable, return the unopened product container at once.

By using this product, user or buyer accepts the following Conditions, Disclaimer of Warranties and Limitations of Liability.

**CONDITIONS:** The Directions for Use of this product are believed to be adequate and must be followed carefully. However, it is impossible to eliminate all risks associated with the use of this product. Crop injury, ineffectiveness or other unintended consequences may result because of such factors as weather conditions, presence of other materials, or the manner of use or application, all of which are beyond the control of Bayer CropScience LP. All such risks shall be assumed by the user or buyer.

**DISCLAIMER OF WARRANTIES:** TO THE EXTENT CONSISTENT WITH APPLICABLE LAW, BAYER CROPSCIENCE LP MAKES NO OTHER WARRANTIES, EXPRESS OR IMPLIED, OF MERCHANTABILITY OR OF FITNESS FOR A PARTICULAR PURPOSE OR OTHERWISE, THAT EXTEND BEYOND THE STATEMENTS MADE ON THIS LABEL. No agent of Bayer CropScience LP is authorized to make any warranties beyond those contained herein or to modify the warranties contained herein. TO THE EXTENT CONSISTENT WITH APPLICABLE LAW, BAYER CROPSCIENCE LP DISCLAIMS ANY LIABILITY WHATSOEVER FOR SPECIAL, INCIDENTAL OR CONSEQUENTIAL DAMAGES RESULTING FROM THE USE OR HANDLING OF THIS PRODUCT.

**LIMITATIONS OF LIABILITY:** TO THE EXTENT CONSISTENT WITH APPLICABLE LAW, THE EXCLUSIVE REMEDY OF THE USER OR BUYER FOR ANY AND ALL LOSSES, INJURIES OR DAMAGES RESULTING FROM THE USE OR HANDLING OF THIS PRODUCT, WHETHER IN CONTRACT, WARRANTY, TORT, NEGLIGENCE, STRICT LIABILITY OR OTHERWISE, SHALL NOT EXCEED THE PURCHASE PRICE PAID, OR AT BAYER CROPSCIENCE LP'S ELECTION, THE REPLACEMENT OF PRODUCT.

Bayer (reg'd), the Bayer Cross (reg'd) and Maxforce® are registered trademarks of Bayer.