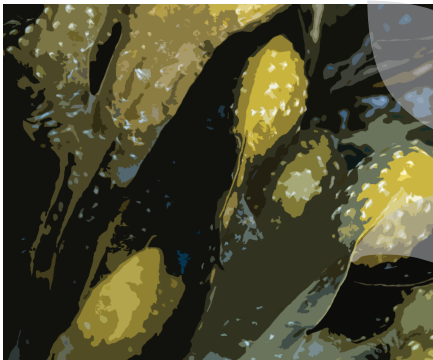




SBC ALGAFLEX

SPECIALTY FERTILIZER

(0.2 - 0.2 - 1.6)



GUARANTEED ANALYSIS

Total Nitrogen (N)	0.2%
0.2% Water Insoluble Nitrogen	
Available Phosphate (P ₂ O ₅)	0.2%
Soluble Potash (K ₂ O)	1.6%
Sodium (Na)	2.5%

Derived from *Ascophyllum nodosum*

DIRECTIONS FOR USE

SBC Algaflex is a highly concentrated liquid seaweed for use as a soil or foliar application.

APPLICATION	RATE
Soil	1-8 pts/acre
Foliar	14-24 oz/acre

COMPATIBILITY

SBC Algaflex is a specialty fertilizer. User assumes sole responsibility for non-phytotoxic compatibility with specific crops or with other materials when such use or handling are contrary to label instructions.

⚠ CAUTION

KEEP OUT OF REACH OF CHILDREN

Harmful if swallowed. Avoid contact with skin, eyes or clothing. Avoid breathing spray mist.

If swallowed, dilute with water and immediately contact medical help. Do not inhale fumes or vapors. Eye contact: Flush eyes with water for 15 minutes and contact physician immediately. When handling, wear impervious gloves and goggles with face shield. If spilled, contain and reclaim for water use. Avoid further contact.

NOTICE TO BUYER

Seller makes no warranty, expressed or implied, concerning the use of this product other than as indicated on this label. Buyer assumes all risks of handling this material when such use and/or handling are contrary to label instructions.

Information regarding the contents and levels of metals in this product is available on the internet at:
<http://www.aapfco.org/metals.html>

CA - 2020

___ Gallons ___ Liters ___ Bulk
 Density: 9.87 pounds per gallon at 68°F



Scan the QR code for product and safety information