

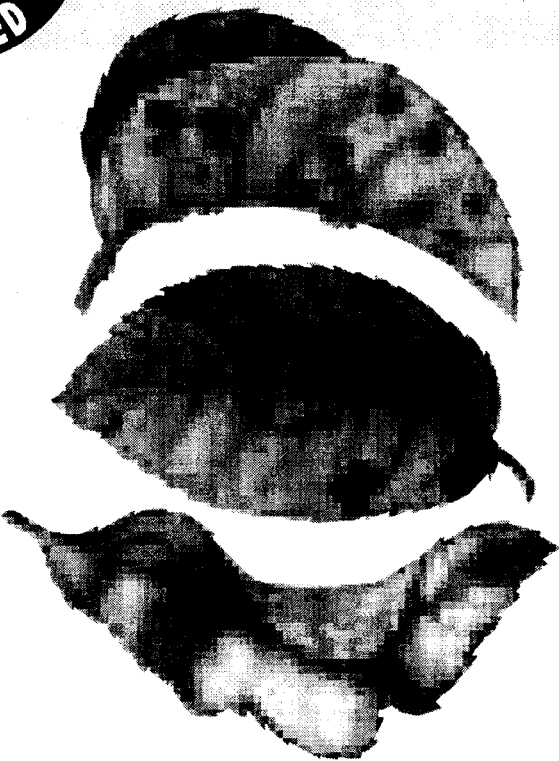
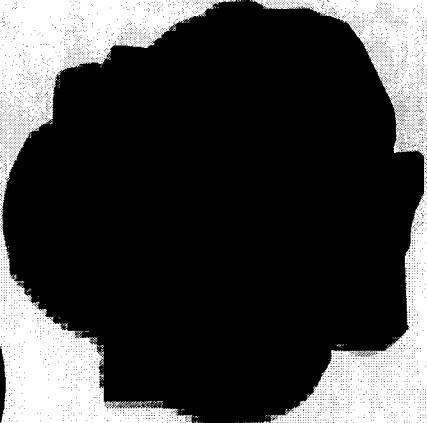
ORTHO®

ROSEPRIDE®

ROSE & SHRUB
DISEASE CONTROL

CONCENTRATE

*Stops & Prevents Black Spot,
Rust & Powdery Mildew*



Active Ingredient
Triforine..... 6.5%
Other Ingredients 93.5%

KEEP OUT OF REACH OF CHILDREN
DANGER See back panel booklet for additional precautionary statements.
NET 1 PT / 473 mL



LF01110T000

ITE CODE IS

ORTHO[®]

OPEN
Resealable Label
for Directions &
Precautions

ROSEPRIDE[®] ROSE & SHRUB DISEASE CONTROL



Promotes beautiful, healthy and vigorous roses by controlling the major rose diseases. Easy to apply with an Ortho[®] Dial 'n Spray[®], hose-end or tank sprayer.

Stops & prevents major rose diseases.
Treats over 200 rose bushes.

Product Facts

Makes up to 48 gallons spray

STOPS & PREVENTS

Black Spot, Powdery Mildew, Rust & Other Plant Diseases

WHERE TO USE

Roses, Flowers, Shrubs & Trees
Do not apply to plants to be used for food or feed

AMOUNT TO USE

1 Tbs (3 tsp) / gal water



Questions, Comments or Medical Information
call 1-800-225-2883 www.ortho.com

Manufactured for
The ORTHO Group
P.O. Box 1749
Columbus, OH 43216
Form LB01120U000
EPA Reg. No. 239-2435
EPA Est. 239-IA-3¹,
58996-MO-1^A
Superscript is first letter
of lot number
Made in USA



5.1.01

0 7 1549 02951 7

1025

DIRECTIONS FOR USE

It is a violation of Federal law to use this product in a manner inconsistent with its labeling.

MIXING INSTRUCTIONS

Amount to Use: 1 Tbs (3 tsp) per gal of water



When using **Ortho® Dial 'n Spray®**: Set dial to 1 Tbs. Pour product into sprayer to fill jar one-quarter to one-half full. **DO NOT** add water. After spraying, unused product can be poured back into its original container.

1 Tablespoon (Tbs) = 3 teaspoons (tsp) 1 fl oz = 2 Tbs

For Aster and Carnation Rusts, use 2 tsp per gal of water.

DISEASES STOPPED & PREVENTED

Black Spot, Powdery Mildew & Rust on Roses **Entomosporium Leaf Spot on Photinia**

Powdery Mildew on Azalea, Begonia, Delphinium, Kalanchoe, Planetree, Calendula, Crapemyrtle,

Azalea Petal Blight on Azaleas & Rhododendrons

Dahlia, Euonymus, Jerusalem Thorn, Lilac, Phlox, Photinia, Snapdragons & Zinnias

Rust on Oxalis, Poplars & Planetrees

Aster Rust on Asters

Carnation Rust on Carnations

1

HOW TO APPLY

Spray thoroughly to cover all plant surfaces (upper and lower leaf surfaces, flowers, stems and branches) including new growth.

WHEN TO APPLY

- Spray when first sign of disease appears.
- Apply every 7 to 10 days if disease conditions persist.

ADDITIONAL TIPS

For Azalea Petal Blight: Spray flowers when disease is first noticed, or to prevent petal blight, spray when the color of the unopened flowers first begins to show. Repeat every 3 to 4 days until flowering ends.

COMBINATION SPRAY WITH INSECTICIDES ON ROSES

RosePride® Rose & Shrub Disease Control may be mixed together with the following insecticides on roses (at the label rates for both products): Diazinon Ultra® Insect Spray, Systemic Insect Killer, Malathion Plus Insect Spray, or Orthene® Systemic Insect Control. Apply fungicide on a regular schedule to control disease and add insecticide only when insect control is desired.

HOW IT WORKS

RosePride is absorbed by leaves and stems for internal protection that won't wash off with rain or watering. No fungicide can clear up diseased areas already on plants, but unaffected areas and new growth will be protected if a regular spray program is followed.

2

STORAGE AND DISPOSAL

STORAGE: Keep pesticide in original container. Do not put concentrate or dilute into food or drink containers. Avoid contamination of feed and foodstuffs. Store in a cool, dry place, preferably in a locked storage area. Do not store diluted spray.

DISPOSAL: PRODUCT – Partially filled bottle may be disposed of by securely wrapping original container in several layers of newspaper and discard in trash.

CONTAINER – Do not reuse empty bottle. Rinse thoroughly before discarding in trash.



People and pets may enter treated area after spray has dried.

3

PRECAUTIONARY STATEMENTS HAZARDS TO HUMANS & DOMESTIC ANIMALS

DANGER: Causes irreversible eye damage. Do not get in eyes. Wear goggles or face shield when handling concentrate. Harmful if swallowed or inhaled. Avoid contact with skin or clothing. Avoid breathing spray mist. Wash thoroughly after handling. Do not graze animals around treated trees or feed foliage or fruit to animals.

FIRST AID: IN CASE OF EYE CONTACT: Flush eyes immediately with fresh water for at least 15 minutes and see a doctor. **IF ON SKIN:** Wash with plenty of soap and water. **IF SWALLOWED:** Give water or milk to drink and telephone for medical advice. **DO NOT** make person vomit unless directed to do so by medical personnel. If medical advice cannot be obtained, then take person and product container to the nearest medical emergency treatment center or hospital. **Note to Physicians:** Emergency Information call 1-800-225-2883.

ENVIRONMENTAL HAZARDS: Do not apply directly to water. Do not contaminate water by cleaning of equipment or disposal of wastes.

PHYSICAL OR CHEMICAL HAZARDS: FLAMMABLE. Keep away from heat and open flame.

NOTICE: Buyer assumes all risks of use, storage or handling of this product not in accordance with directions.

The ORTHO Guarantee

If for any reason you are not satisfied with this product, mail us proof of purchase to obtain a full refund of your purchase price.



Questions, Comments or Medical Information
call 1-800-225-2883 www.ortho.com

Manufactured for
The ORTHO Group
P.O. Box 1749
Columbus, OH 43216

Form LB01120U000
EPA Reg. No. 239-2435
EPA Est. 239-1A-3', 58996-MO-1A
Superscript is first letter of lot number
Made in USA

PRESS TO RESEAL

